



BERKLEY CHARTER SCHOOL REPORT CARD

Learning For All, Whatever It Takes!

August 2019

Mission and Vision

Berkley Charter School is committed to *Learning For All, Whatever It Takes!* Our vision is for all students to perform at or above grade level in all academic areas.

We provide an optimal learning environment that emphasizes research based practices, time on task, and an integrated relevant curriculum.

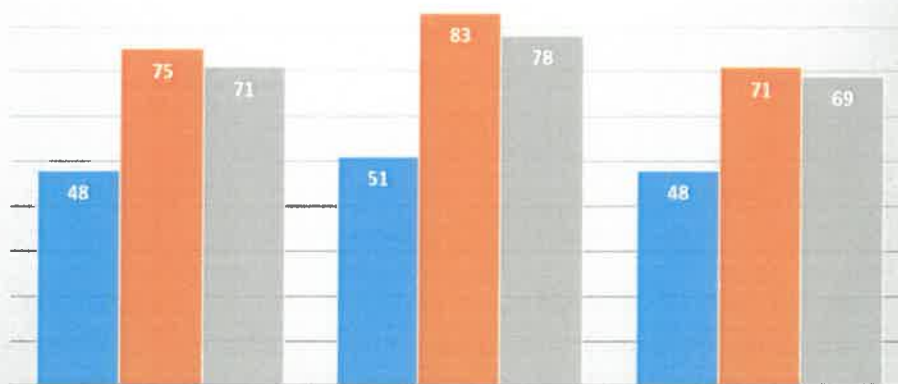
Learning for all includes ensuring all students and teachers have the necessary resources needed for optimal learning, as well as, providing a well trained, caring staff that utilizes data to drive instructional practices.



Key Points of Interest:

- ⇒ **High Performing Charter School**
- ⇒ **School of Excellence**
- ⇒ **Polk Education Foundation grant recipient**
- ⇒ **Kagan Cooperative Learning Model School**
- ⇒ **100% of parents reported they are pleased with the education their child receives at Berkley**

Percentage of Students Meeting High Standards on State Assessments



	English Language Arts	Mathematics	Science
Polk 2019	48	51	48
Berkley 2019	75	83	71
Berkley 2018	71	78	69

School Grade:

2018-2019	A
2017-2018	A
2016-2017	A
2015-2016	A
2014-2015	A

High Performing Charter School! School of Excellence!

Learning For All, Whatever It Takes!

Berkley Assurances:

<p>Students</p> <ul style="list-style-type: none"> • Think and reason • Work collaboratively • Use effective social skills • Participate actively • Fully engaged in learning 	<p>Curriculum</p> <ul style="list-style-type: none"> • Clearly defined • Relevant • Standards based • Supported by best practices
<p>Teachers</p> <ul style="list-style-type: none"> • Nurture children • Act as professionals • Learners themselves • Monitor student achievement • Instruct using best practices • Incorporate stimulating learning environments 	<p>Assessments</p> <ul style="list-style-type: none"> • Varied and aligned with standards • Used to monitor student achievement • Used to monitor quality of education • Use data to make educational decisions
<p>Administrators</p> <ul style="list-style-type: none"> • Foster learning as a priority • Learners themselves • Engage in visionary leadership • Listen and respond to concerns • Facilitate and advocate for learning • Nurture, support, and empower students and staff 	<p>Learning Space</p> <ul style="list-style-type: none"> • Safe and orderly • Attractive and inviting • Support technology • Flexible enough to support varied learning needs
<p>Support Staff</p> <ul style="list-style-type: none"> • Nurture children • Learners themselves • Flexible and adaptable • Act courteous and professional • Positive role models 	<p>Time</p> <ul style="list-style-type: none"> • Is organized to foster learning • Accommodates for various learning rates • Enables staff to learn and collaborate • safeguards time-on-task for academic achievement
<p>Parents and Community</p> <ul style="list-style-type: none"> • Informed • Partners in learning • Provide financial and human resources for support of student learning 	<p>Funding</p> <ul style="list-style-type: none"> • Handled in a fiscally responsible manner • Budgeted to reflect the mission and vision of the school

Kagan Cooperative Learning

Berkley Charter School is proud to be one of a very select number of Kagan Model Schools in the state of Florida! Our staff receives intensive and continual training on the use of Kagan Cooperative Learning Structures.

Cooperative Learning is when students work together towards learning a goal. They may work with a partner, team, or the whole class.

Kagan structures are a set of cooperative learning activities that have specific steps to ensure students work together effectively and productively, and have individual accountability within the group.

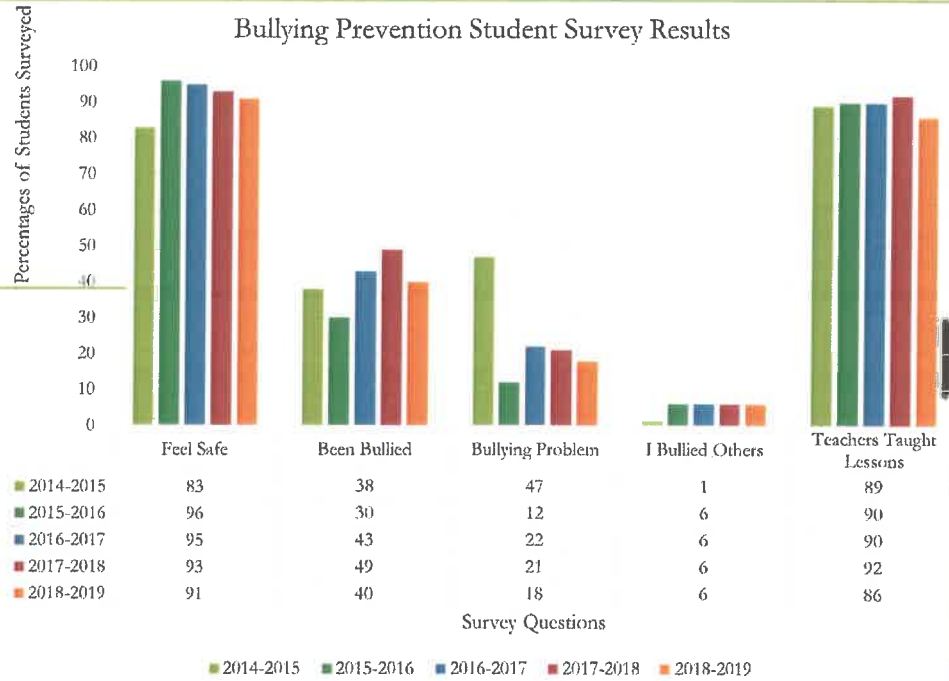
There are many well documented and researched academic, psychological, and social benefits to using Kagan Cooperative Learning. Using the structures regularly drastically reduces negative behavior. Students are taught how to positively interact with each other through cooperative learning and are taught to offer their partner/group praise when they get an answer right.



It's all about engagement!

2019 Berkley Bullying Prevention Plan

- Create classroom communities
- Incorporate “family” meetings
- Teach bullying lessons each year
- Character education activities
- Adhere to Anti-bullying policies
- Utilize Kagan Cooperative Learning
- Parent tips included in newsletter/student agenda
- Focus on reteaching expectations



Bullying is defined as unwanted written, physical, or verbal aggression that is generally repeated. There is an imbalance of power. The behavior usually involves public humiliation.

There are many ways to prevent bullying.

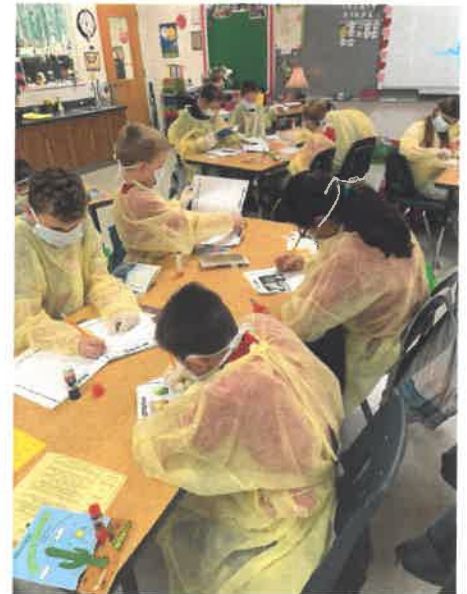
- Improve the school climate.
- Create rituals within the classroom.
- Avoid conflict at the beginning, middle, and end of the day.
- All students should have a feeling of belonging to the group.
- Create a classroom family.

Advice for kids!

- Avoid the bully and use the buddy system.
- Don't respond to the bullying by fighting or bullying back. This could escalate the problem to violence and someone could get hurt.
- Act brave, walk away, and ignore the bully. Firmly tell the bully to stop then walk away.
- Tell an adult. Teachers, parents, principals and other adults can help to stop the bully.
- Talk about it to someone you trust.
- Remove the incentives. Having special items at school can cause problems.
- Don't be part of the audience. If you feel safe: stand up and speak out against the bully.

Berkley's Bully Prevention Program

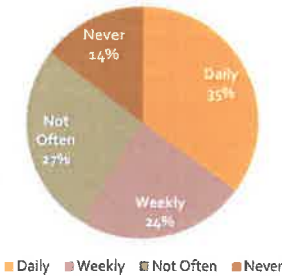
- Create classroom families. Have bimonthly meetings.
- Integrate anti-bullying concepts into the curriculum. All teachers teach at least five lesson throughout the school year.
- Students are encouraged to report incidents of bullying to school staff via verbal communication, email, or written communication.
- Include parent tips in the monthly newsletter or school agenda.
- Promote character education activities.
- Establish and enforce anti-bullying policies.
- Utilize KAGAN Cooperative Learning in the classroom.



2019 Student Lunch Survey Results

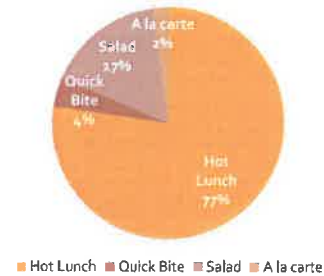
When compared with past years' results, the number of students participating in the school lunch program daily and weekly remained about the same.

Percentage of students eating school lunch.



When compared with past years' results, we continue to have most students select the hot lunch choice. The salad and quick bite selections remained about the same and a la carte was down slightly.

Percentage of student's lunch selection.



Overall, we are pleased with the meals we provide to our students. In a recent survey a total of 452 students from grades 2-5 responded. Students are given a choice of hot lunch, quick bites, salad, or a la carte items. Most students select the hot lunch. A total of 67% of the students who participated in the survey indicated that food service staff were friendly. About half of the students in the survey indicated the appearance of the café was clean and pleasant during their visit.



It is our goal for our food service program to be self-sustaining while also providing our students with nutritious well-balanced meal choices. We participate and comply with the policies of the National School Lunch Program.

Our wellness committee meets annually to monitor and set goals for the development and implementation of our local school wellness policy. The current wellness policy may be found on our school website www.berkeleyknights.net under the café tab. Parents, students, representatives of the school food authority, teachers, school health professionals, the board members, and the general public can participate in the development, implementation and annual review of the local school wellness policy. Please contact Suzanne Martin at Suzanne.martin@berkeleyknights.net if you are interested in participating on our wellness committee.