

BERKLEY CHARTER SCHOOL REPORT CARD



Learning For All, Whatever It Takes!

August 2016



Mission and Vision

Berkley Charter School is committed to *Learning For All, Whatever It Takes!* Our vision is for all students to perform at or above grade level in all academic areas.

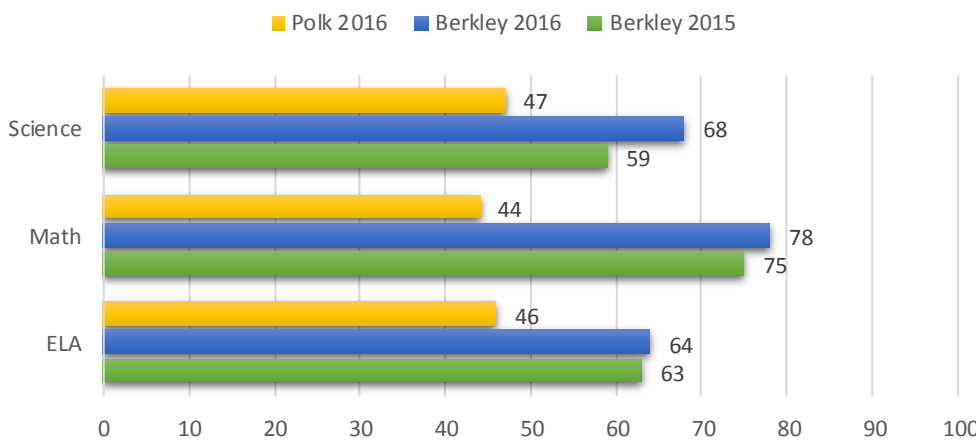
We provide an optimal learning environment that emphasizes research based practices, time on task, and an integrated relevant curriculum.

Learning for all includes ensuring all students and teachers have the necessary resources needed for optimal learning, as well as, providing a well trained, caring staff that utilizes data to drive instructional practices.

Special Points of Interest:

- *Kagan Cooperative Learning*
- *Advanced Academics*
- *Superior Arts*
- *Clubs*
- *Tutoring Programs*
- *Technology*
- *Inclusion of all Students*

Percentage of Students Meeting High Standards on State Assessments



School Grade:

2015-16	A
2014-15	A
2013-14	B
2012-13	B
2011-12	B

High Performing Charter School!

Learning For All, Whatever It Takes!

Berkley Assurances:

<p>Students</p> <ul style="list-style-type: none"> • Think and reason • Work collaboratively • Use effective social skills • Participate actively • Fully engaged in learning 	<p>Curriculum</p> <ul style="list-style-type: none"> • Clearly defined • Relevant • Standards based • Supported by best practices
<p>Teachers</p> <ul style="list-style-type: none"> • Nurture children • Act as professionals • Learners themselves • Monitor student achievement • Instruct using best practices • Incorporate stimulating learning environments 	<p>Assessments</p> <ul style="list-style-type: none"> • Varied and aligned with standards • Used to monitor student achievement • Used to monitor quality of education • Use data to make educational decisions
<p>Administrators</p> <ul style="list-style-type: none"> • Foster learning as a priority • Learners themselves • Engage in visionary leadership • Listen and respond to concerns • Facilitate and advocate for learning • Nurture, support, and empower 	<p>Learning Space</p> <ul style="list-style-type: none"> • Safe and orderly • Attractive and inviting • Support technology • Flexible enough to support varied learning needs
<p>Support Staff</p> <ul style="list-style-type: none"> • Nurture children • Learners themselves • Flexible and adaptable • Act courteous and professional • Positive role models 	<p>Time</p> <ul style="list-style-type: none"> • Is organized to foster learning • Accommodates for various learning rates • Enables staff to learn and collaborate • safeguards time-on-task for academic achievement
<p>Parents and Community</p> <ul style="list-style-type: none"> • Informed • Partners in learning • Provide financial and human resources for support of student learning 	<p>Funding</p> <ul style="list-style-type: none"> • Handled in a fiscally responsible manner • Budgeted to reflect the mission and vision of the school

Kagan Cooperative Learning

Berkley Charter School is proud to be one of a very select number of Kagan Model Schools in the state of Florida! Our staff receives intensive and continual training on the use of Kagan Cooperative Learning Structures.

Cooperative Learning is when students work together towards learning a goal. They may work with a partner, team, or the whole class.

Kagan structures are a set of cooperative learning activities that have specific steps to ensure students work together effectively and productively, and have individual accountability within the group.

There are many well documented and researched academic, psychological, and social benefits to using Kagan Cooperative Learning. Using the structures regularly drastically reduces negative behavior. Students are taught how to positively interact with each other through cooperative learning and are taught to offer their partner/group praise when they get an answer right.



It's all about engagement!